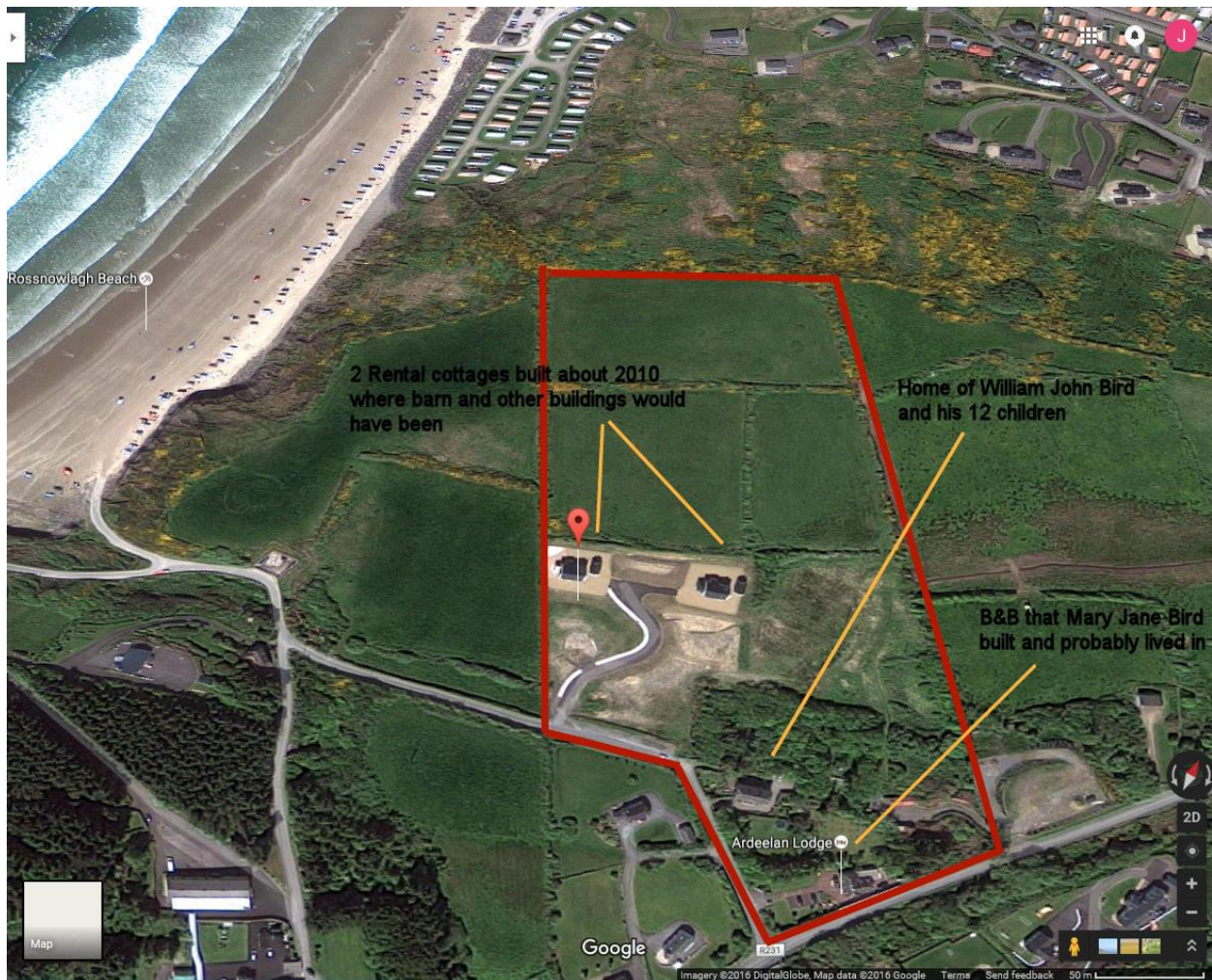


## Land At Ardeelan Lower, Donegal, Ireland

Some pics from google maps.



The above shows the approximate size of the land the Bird family lived on for over 200 years (may have been larger than this). This view shows the 2 rental cottages that are where the barns and other buildings would have been located. This view also shows the home where William John Bird and his large family lived and the location of the B&B William's mother, Mary Jane, owned until she died in 1906.



The above is a google maps street view of the [two cottages](#) that are now on the land and are holiday rentals.





The [B&B](#) on the Ardeelan land.

